

IDH3B Antibody (N-term)
Purified Rabbit Polyclonal Antibody (Pab)
Catalog # AP20575a**Specification**

IDH3B Antibody (N-term) - Product Information

Application	IHC-P, WB,E
Primary Accession	O43837
Other Accession	Q28479
Reactivity	Human
Predicted	Monkey
Host	Rabbit
Clonality	Polyclonal
Isotype	Rabbit IgG
Calculated MW	42184

IDH3B Antibody (N-term) - Additional Information**Gene ID** 3420**Other Names**

Isocitrate dehydrogenase [NAD] subunit beta, mitochondrial, Isocitric dehydrogenase subunit beta, NAD(+)-specific ICDH subunit beta, IDH3B

Target/Specificity

This IDH3B antibody is generated from a rabbit immunized with a KLH conjugated synthetic peptide between 15-49 amino acids from the N-terminal region of human IDH3B.

Dilution

IHC-P~~1:25

WB~~1:1000

E~~Use at an assay dependent concentration.

Format

Purified polyclonal antibody supplied in PBS with 0.09% (W/V) sodium azide. This antibody is purified through a protein A column, followed by peptide affinity purification.

Storage

Maintain refrigerated at 2-8°C for up to 2 weeks. For long term storage store at -20°C in small aliquots to prevent freeze-thaw cycles.

Precautions

IDH3B Antibody (N-term) is for research use only and not for use in diagnostic or therapeutic procedures.

IDH3B Antibody (N-term) - Protein Information**Name** IDH3B

Function Plays a structural role to facilitate the assembly and ensure the full activity of the enzyme catalyzing the decarboxylation of isocitrate (ICT) into alpha-ketoglutarate. The heterodimer composed of the alpha (IDH3A) and beta (IDH3B) subunits and the heterodimer composed of the alpha (IDH3A) and gamma (IDH3G) subunits, have considerable basal activity but the full activity of the heterotetramer (containing two subunits of IDH3A, one of IDH3B and one of IDH3G) requires the assembly and cooperative function of both heterodimers.

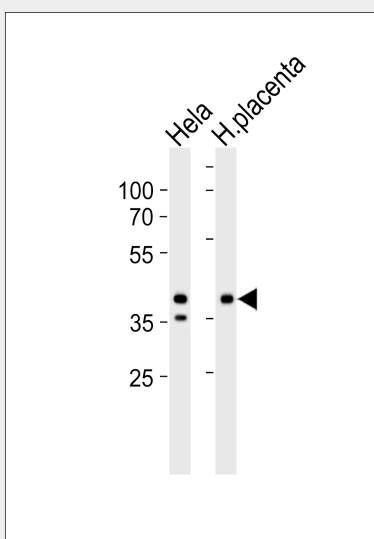
Cellular Location
Mitochondrion.

IDH3B Antibody (N-term) - Protocols

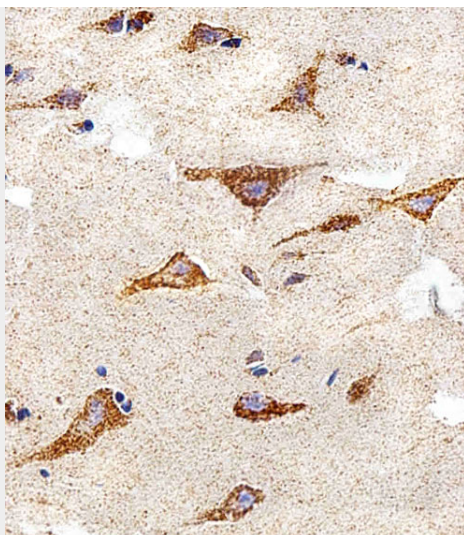
Provided below are standard protocols that you may find useful for product applications.

- [Western Blot](#)
- [Blocking Peptides](#)
- [Dot Blot](#)
- [Immunohistochemistry](#)
- [Immunofluorescence](#)
- [Immunoprecipitation](#)
- [Flow Cytometry](#)
- [Cell Culture](#)

IDH3B Antibody (N-term) - Images



Western blot analysis of lysates from HeLa cell line and human placenta tissue lysate (from left to right), using IDH3B Antibody (N-term) (Cat. #AP20575a). AP20575a was diluted at 1:1000 at each lane. A goat anti-rabbit IgG H&L(HRP) at 1:5000 dilution was used as the secondary antibody. Lysates at 35ug per lane.



Immunohistochemical analysis of paraffin-embedded H. brain section using IDH3B Antibody (N-term)(Cat#AP20575a). AP20575a was diluted at 1:25 dilution. A peroxidase-conjugated goat anti-rabbit IgG at 1:400 dilution was used as the secondary antibody, followed by DAB staining.

IDH3B Antibody (N-term) - References

- Kim Y.-O.,et al.J. Biol. Chem. 274:36866-36875(1999).
Ota T.,et al.Nat. Genet. 36:40-45(2004).
Deloukas P.,et al.Nature 414:865-871(2001).
Mural R.J.,et al.Submitted (SEP-2005) to the EMBL/GenBank/DDBJ databases.
Bechtel S.,et al.BMC Genomics 8:399-399(2007).